

A white rectangular sign with black text is mounted on a brown wall. The sign is slightly tilted and has a thin black border. The text on the sign is in a bold, sans-serif font and reads "NOW WASH YOUR HANDS".

**NOW WASH
YOUR HANDS**

we are good our rest rooms regularly got 89% satisfaction

RUBBISH
HERE
PLEASE

our recycling was improving

martin brown



dead ends looming ...

martin brown



perhaps too many barriers to innovation, creativity ...



too many systems that go no where

martin brown

emails are
bad
emails are
evil



‘nuff said

martin brown



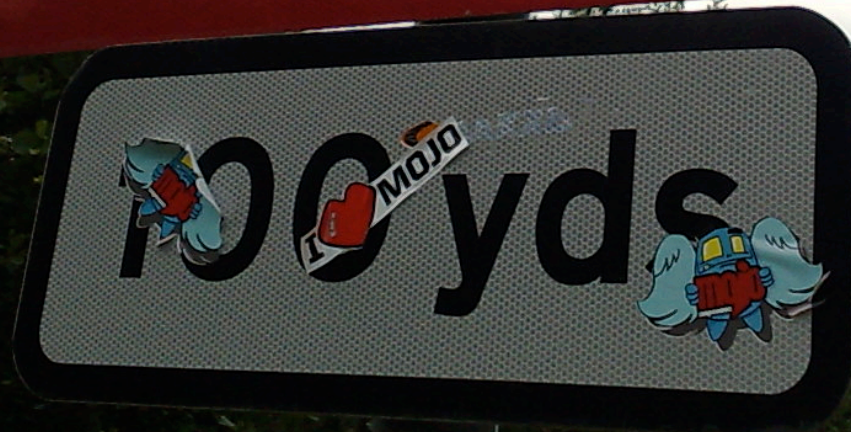
what happens to all those measures ?

martin brown



peak oil?

martin brown



a pedal economy?



everyone is seemingly better than me (us)

martin brown



we are different - aren't we ?



...what does the community really think of us?



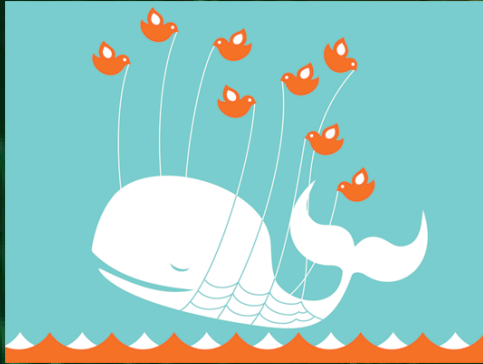
and those visitors, what do they think

martin brown



future generations ...may be we should listen...

martin brown



wow, SaaS, web2.0, fm2.0 and introducing twitter poe TM

martin brown



... a second life for fm

lights

LOCAL SIGNS 0181-640 6821 REF. A201

martin brown

**PLEASE
DO NOT FEED
THE HAGGIS !!**

now starting to think outside

martin brown



really outside

martin brown



Gjelder hele
Svalbard

FM new horizons

...

martin brown



and everyone

blah

....ever after ...